



ORIGINAL ARTICLE

Secondary use of data extracted from a clinical information system to assess the adherence of tidal volume and its impact on outcomes



S. Manrique^{a,b,*,1}, M. Ruiz-Botella^{a,1}, A. Rodríguez^{a,b,c}, F. Gordo^d, J.J. Guardiola^e, M. Bodí^{a,b,c}, J. Gómez^{a,b}, on behalf the Advanced Analysis of Critical Data (AACD) Research Group

^a Intensive Care Unit, Hospital Universitario Joan XXIII, Tarragona, Spain

^b Instituto de Investigación Sanitaria Pere i Virgili, Rovira i Virgili University, Tarragona, Spain

^c Centro de Investigación Biomédica en Red de Enfermedades Respiratorias (CIBERES). Instituto de Salud Carlos III, Spain

^d Servicio de Medicina Intensiva, Hospital Universitario del Henares, Coslada, Madrid, Grupo de Investigación en Patología Crítica, Grado de Medicina, Universidad Francisco de Vitoria, Pozuelo de Alarcón, Madrid, Spain

^e University of Louisville, United States

Received 4 November 2021; accepted 9 March 2022

Available online 14 May 2022

KEYWORDS

Mechanical ventilation;
Quality indicators;
Clinical information system;
Tidal volume

Abstract

Objectives: To extract data from clinical information systems to automatically calculate high-resolution quality indicators to assess adherence to recommendations for low tidal volume.

Design: We devised two indicators: the percentage of time under mechanical ventilation with excessive tidal volume (>8 mL/kg predicted body weight) and the percentage of patients who received appropriate tidal volume (\leq 8 mL/kg PBW) at least 80% of the time under mechanical ventilation. We developed an algorithm to automatically calculate these indicators from clinical information system data and analyzed associations between them and patients' characteristics and outcomes.

Settings: This study has been carried out in our 30-bed polyvalent intensive care unit between January 1, 2014 and November 30, 2019.

Patients: All patients admitted to intensive care unit ventilated >72 h were included.

Abbreviations: CIS, clinical information system; ICU, intensive care unit; PBW, predicted body weight; ARDS, acute respiratory distress syndrome; TV, tidal volume; MV, mechanical ventilation; ETL, extraction transform and load; SEMICYUC, Spanish Intensive Care Society – Sociedad Española de Medicina Intensiva y Crítica y Unidades Coronarias; APACHE, II Acute Physiology And Chronic Health Evaluation II; SpO₂, pulse oximetry; RASS, Richmond Agitation Sedation Scale; SOFA, Sequential Organ Failure Assessment; CRRT, renal replacement therapy; PEEP, end-expiratory pressure; Ppeak, peak pressure; Pplat, plateau pressure; RR, respiratory rate; FiO₂, fraction of inspired oxygen; LOS, length of stay.

* Corresponding author.

E-mail address: smanriquemoreno@gmail.com (S. Manrique).

¹ Co-first authors.

<https://doi.org/10.1016/j.medin.2022.03.013>

0210-5691/© 2022 Elsevier España, S.L.U. y SEMICYUC. All rights reserved.

Intervention: Use data collected automatically from the clinical information systems to assess adherence to tidal volume recommendations and its outcomes.

Main variables of interest: Mechanical ventilation days, ICU length of stay and mortality.

Results: Of all admitted patients, 340 met the inclusion criteria. Median percentage of time under mechanical ventilation with excessive tidal volume was 70% (23%–93%); only 22.3% of patients received appropriate tidal volume at least 80% of the time. Receiving appropriate tidal volume was associated with shorter duration of mechanical ventilation and intensive care unit stay. Patients receiving appropriate tidal volume were mostly male, younger, taller, and less severely ill. Adjusted intensive care unit mortality did not differ according to percentage of time with excessive tidal volume or to receiving appropriate tidal volume at least 80% of the time.

Conclusions: Automatic calculation of process-of-care indicators from clinical information systems high-resolution data can provide an accurate and continuous measure of adherence to recommendations. Adherence to tidal volume recommendations was associated with shorter duration of mechanical ventilation and intensive care unit stay.

© 2022 Elsevier España, S.L.U. y SEMICYUC. All rights reserved.

PALABRAS CLAVE

Ventilación mecánica;
Indicadores de
calidad;
Sistemas de
Información Clínica;
Volumen tidal

Uso secundario de los datos del Sistema de Información Clínica para evaluar la adherencia a las guías de práctica clínica respecto al volumen tidal y su impacto en los resultados

Resumen

Objetivos: Extraer los datos del Sistema de Información Clínica para calcular automáticamente indicadores de calidad de alta resolución para evaluar la adherencia a las recomendaciones sobre el volumen tidal.

Diseño: Ideamos 2 indicadores: el porcentaje de tiempo en ventilación mecánica con volumen tidal excesivo (> 8 mL/kg peso ideal) y el porcentaje de pacientes con volumen tidal apropiado (≤ 8 mL/kg peso ideal) al menos el 80% del tiempo en ventilación mecánica. Desarrollamos un algoritmo para calcular automáticamente dichos indicadores con los datos del Sistema de Información Clínica y analizamos su asociación con las características de los pacientes y su evolución.

Ambiente: El estudio se llevó a cabo en una unidad de cuidados intensivos polivalente de 30 camas desde el 1 enero 2014 hasta el 20 noviembre 2019.

Pacientes: Se incluyeron en el estudio todos los pacientes ingresados en la unidad de cuidados intensivos conectados a ventilación mecánica > 72 h.

Intervención: Usar los datos recogidos automáticamente desde el Sistema de Información Clínica para evaluar la adherencia a las recomendaciones del volumen tidal y sus resultados.

Principales variables de interés: Días de ventilación mecánica, días de estancia en la unidad de cuidados intensivos y mortalidad.

Resultados: De todos los pacientes ingresados, 340 cumplieron los criterios de inclusión. El tiempo medio de ventilación mecánica con volumen tidal excesivo fue 70% (23-93%); solo el 22,3% de los pacientes recibió un volumen tidal apropiado al menos el 80% del tiempo. Recibir un volumen tidal apropiado se asoció con menos días de ventilación mecánica y de estancia en la unidad de cuidados intensivos. Los pacientes que recibieron un volumen tidal apropiado fueron más frecuentemente hombres, más jóvenes, más altos y menos graves. No hubo diferencias significativas en la mortalidad ajustada en relación con el porcentaje de tiempo de volumen tidal excesivo o recibir un volumen tidal apropiado al menos el 80% del tiempo.

Conclusiones: El cálculo automático de los indicadores de calidad desde el Sistema de Información Clínica puede proporcionarnos una medida precisa y continua de la adherencia a las recomendaciones. La adherencia a las recomendaciones sobre el volumen tidal se asocia con menos días de ventilación mecánica y de estancia en la unidad de cuidados intensivos.

© 2022 Elsevier España, S.L.U. y SEMICYUC. Todos los derechos reservados.

Introduction

A growing number of healthcare performance measures are being publicly reported. Patients, providers, payers and policymakers deserve valid, reliable and transparent quality measures.¹ Indicators are the best tools for measuring quality, but collecting the information needed to calculate them is time consuming and complex.² Information technology can provide to critical care with new tools to improve management, decision making and effectiveness of care.³

Indicators should be measurable, reliable, valid and reproducible.⁴ Using indicators based on data extracted from the clinical information systems (CIS) can help ensure homogeneous definitions and reduce the time professionals need to invest in collecting data. Recently, our group showed that it is feasible to automatically generate the minimum dataset and intensive care unit (ICU) quality indicators with a data management tool we developed using business discovery techniques on an associative data model created from variables stored in the CIS.⁵

Ventilator management is an essential part of critical care. However, mechanical ventilation (MV) probably can aggravate acute lung injury as ventilator-induced lung injury (VILI), especially in patients with acute respiratory distress syndrome (ARDS).⁶ As high tidal volume (TV) has been demonstrated to be prejudicial and produced volutrauma,⁷ the standard of care in these patients is protective mechanical ventilation with low TV (<8 mL/kg predicted body weight (PBW)),⁸ reducing mortality by 22%.⁹ Moreover, some studies conclude that protective mechanical ventilation is not only beneficial for patients with ARDS, but also improve outcomes in patients with healthy lungs.^{10,11} A recent large epidemiologic study, LUNG SAFE, concluded that ARDS is underdiagnosed and often goes unrecognized until after significant delays.¹² Growing evidence supports the use of low TV as early as possible in patients with acute respiratory failure regardless of whether ARDS has been diagnosed.¹⁰ However, different studies show that patients with ARDS do not consistently receive low TV despite over 15 years' effort to ensure its adoption into clinical practice.^{13–15}

Our approach consists in taking profit of all the continuous measurements automatically collected by the CIS to create high-resolution quality indicators (HR-QI) to assess TV, improving snapshot-based assessments and saving time to healthcare professionals.

Our main objective was to define, implement and evaluate two HR-QI to assess adherence to clinical practice guidelines for protective mechanical ventilation in our ICU using data automatically collected in our CIS database. Our secondary objective was to analyze patients' characteristics according to those HR-QI and its impact on outcomes.

Patients and methods

Design

We included all non-coronary patients who received invasive MV in our 30-bed polyvalent ICU Hospital Universitario Joan XXIII (Tarragona) between January 1, 2014 and November 30, 2019. We did not include coronary patients because they are attended by other specialists. We excluded patients whose

height and/or weight was not recorded and those <130 cm tall, for whom the PBW equation may not apply.¹⁶ We also excluded patients who received MV < 72 h because they were not at risk for prolonged exposure to high TV and those ventilated with pressure support more than 20% of the time, because we were interested in TV delivery directly set by the physicians.

All patients or their legal representatives provided written informed consent. Our center's research ethics committee approved the study protocol (CEIm Institut d'Investigació Sanitària Virgili - Reference IRB#41/2016).

Patient data capture

Since 2013, our ICU has been using a commercial CIS (Centricity Critical Care® from General Electric) to enter orders, document clinical acts, record medication administration and collect data. Moreover, mechanical ventilators are connected to the CIS, and all respiratory parameters are recorded every 2 min. All inputs are stored in a data storage repository. All data used in this study have been extracted from the CIS database by means of ETL (extraction, transform and load) processes implemented with Python 3.

Clinical variables

We extracted the following variables: age, sex, admission source, reason for admission (classification according to variables of the Minimum Data Set of Intensive Care Unit CMBD-UCI of the Sociedad Española de Medicina Intensiva y Unidades Coronarias (SEMICYUC) criteria⁵) (Supplementary Table 1), patient type (medical or surgical), admission type (urgent or scheduled), height, weight, APACHE II and the worst values of clinical variables as mean arterial pressure, body temperature, heart rate, pulse oximetry (SpO₂), pH, PaCO₂, serum lactate, serum bicarbonate, Richmond Agitation Sedation Scale (RASS), Sequential Organ Failure Assessment (SOFA) score, administration of vasopressor drugs, continuous renal replacement therapy (CRRT) and administration of analgesics and sedatives in the first 48 h of MV.

Ventilatory variables

We analyzed the set and/or observed values of the following ventilatory variables: TV, positive end-expiratory pressure (PEEP), peak pressure (Ppeak), plateau pressure (Pplat), respiratory rate (RR) and fraction of inspired oxygen (FiO₂). All ventilation variables were extracted as median values for each hour during the first 48 h after starting MV (Table 1). For calculate HR-QI we have recorded TV during the entire time in MV.

Because PaO₂ was not recorded in all patients, instead of PaO₂/FiO₂ we used pulse oximetry (SpO₂)/FiO₂ [S/F] ratio, which correlates acceptably with PaO₂/FiO₂.¹⁷

Table 1 Characteristics of patients included in the study (n = 340).

Variables	Values
Demographics (at admission)	
Age (years), median (p25–75)	58.4 (48.8–71.0)
Male sex, n (%)	234 (68.8)
Weight (kg), median (p25–75)	75.0 (70–85.0)
Height (cm), median (p25–75)	170 (165–175)
Admission type	
Medical admission, n (%)	220 (64.7)
Emergency surgical admission, n (%)	112 (32.9)
Elective surgical admission, n (%)	8 (2.4)
Reason for admission	
Respiratory failure, n (%)	82 (24.1)
Sepsis, n (%)	51 (15)
Others, n (%)	207 (60.9)
Severity scores (at 24 h of admission)	
APACHE ^a II score (points), median (p25–75)	24 (19–30)
SOFA ^b score (points), median (p25–75)	8 (6–10)
Respiratory and mechanical ventilation (first 48 h)	
SpO ₂ ^c (%)	96 (94–98)
SpO ₂ /FiO ₂ , median (p25–75)	240 (160–312.9)
FiO ₂ ^d (%)	35 (30–45)
% controlled MV modes	93 (86–99)
Set MV ^e flow (L/min), median (p25–75)	60 (50–60)
Positive end-expiratory pressure (cmH ₂ O), median (p25–75)	5 (5–8)
Peak pressure (cmH ₂ O), median (p25–75)	24 (22–28)
Plateau pressure (cmH ₂ O), median (p25–75)	20 (17–25)
Observed respiratory rate (breaths/min), median (p25–75)	17 (16–19)
Set respiratory rate (breaths/min), median (p25–75)	18 (16–20)
Set tidal volume (mL), median (p25–75)	520 (480–552)
Observed tidal volume (mL), median (p25–75)	520 (480–560)
Set tidal volume (mL/predicted body weight), median (p25–75)	6.8 (6.0–7.6)
Observed tidal volume (mL/predicted body weight), median (p25–75)	6.8 (5.9–7.5)
Clinical and laboratory variables (first 48 h)	
Heart rate (beats per minute), median (p25–75)	102 (87–118)
Mean arterial pressure (mmHg), median (p25–75)	68 (63–72)
Serum lactate (mmol/L), median (p25–75)	2.1 (1.5–3.0)
Body temperature (°C), median (p25–75)	37 (36.5–37.5)
Richmond Agitation-Sedation Scale (points), median (p25–75)	–3 (–3 to –2)
Treatments and outcome (first 48 h)	
Vasoactive drugs, n (%)	243 (71.5)
Sedative drugs, n (%)	318 (93.5)
Neuromuscular blocking agents, n (%)	47 (13.83)
Continuous renal replacement, n (%)	42 (12.4)
Died in ICU, n (%)	151 (44.4)
Died in hospital, n (%)	156 (45.9)

Data are shown as median (interquartile range) or number (percentage) of patients, as appropriate.

^a Acute physiology and chronic health evaluation.

^b Sequential organ failure assessment.

^c Oxygen saturation from pulse oximetry.

^d Fraction of inspired oxygen.

^e Mechanical ventilation.

Primary endpoints

We designed two HR-QI to perform a high-resolution assessment of the adherence to low TV recommendations defined as follows:

- 1) *Percentage of time on MV with excessive TV (%tTVot)*, defined as the time under MV in which the TV is above the recommended values [$> 8 \text{ mL/kg PBW}$] and calculated according to the formula:

$$\frac{\text{time on MV with TV} > \frac{8 \text{ mL}}{\text{kgPBW}}}{\text{Total time on MV}} \times 100$$

- 2) *Percentage of patients who received appropriate TV (%pTVa)*, calculated according to the formula:

$$\frac{\text{No. of patients with TV} \leq \frac{8 \text{ mL}}{\text{kgPBW}} \text{ during } > 80\% \text{ time on MV}}{\text{No. of patients on MV}} \times 100$$

PBW was calculated according to the formulas:

Men: $50 + [0.91 \times \text{Height in cm} - 152.4]$

Women: $45.5 + [0.91 \times \text{Height in cm} - 152.4]$

Secondary endpoints

Duration of invasive MV, defined as the number of days between the date of intubation and the date of MV disconnection (picked by a nurse the first day of MV disconnection into the CIS) or death; ICU length of stay (LOS), defined as the number of days between the date of admission to the ICU and the date of discharge from the ICU; hospital LOS, defined as the number of days between the date of admission to the hospital and the date of discharge from the hospital; and ICU and hospital mortality.

Statistical analysis

Categorical variables are expressed as counts (percentage) and continuous variables as medians (interquartile range). To compare patient demographic and clinical characteristics between two groups, we used the chi-square test or Fisher’s exact test for categorical variables, as appropriate, and Student’s *t*-test or the Mann–Whitney *U* test for continuous variables. For univariate comparisons with more than two groups, we used the chi-square test for categorical variables and the Kruskal–Wallis test for continuous variables. Multivariate comparisons were performed using binary logistic regression and models were evaluated using its accuracy and area under the receiver operating characteristic curve (AUC). Logistic regression coefficients were converted to odds ratios to easy interpretability of covariates influence in each group.

To avoid spurious significance between variables related to the large volume of data analyzed, we set significance at $p < 0.005$.¹⁸

To characterize patients’ profile according to our first HR-QI %tTVot, patients were categorized into quartiles. To investigate the association between baseline variables (at ICU admission and first 48h of invasive MV) and %tTVot, we first performed univariate analysis. Afterwards, we used binary logistic regression to compare the fourth (highest) quartile against the combined group of patients in the first, second and third quartiles in a multivariate model including only demographics and severity covariates that were significant in the univariate analysis.

To characterize patients’ profile according to our second HR-QI %pTVa, patients were divided in two groups, those who accomplished the HR-QI and those who do not. To investigate the association between baseline variables and the two groups, we first performed univariate analysis. Afterwards, we used binary logistic regression to compare them in a mul-

tivariate model including only demographics and severity covariates that were significant in the univariate analysis.

To evaluate the association between inappropriate ventilation (according to our two HR-QI) and mortality, we used univariate and binary logistic regression analysis following the same procedure but including both HR-QI in the final analysis. Analyses were done with Python (Python Software Foundation – Python.org) and R (CRAN-R project) software.

Results

Population characteristics

We analyzed data from 340 patients (Fig. 1) whose median age was 58.4 (48.8–71.0) years; 235 (69%) were men with median APACHE II score of 24 (19–30) points and median SOFA score of 8 (6–10) points (Table 1).

HR-QI (%tTVot)

The results of our first HR-QI showed a median %tTVot of 70% (23%–93%), with a median excessive volume of 8% (3%–15%) over the amount required according to patient’s PBW. Regarding to patient’s characterization according to

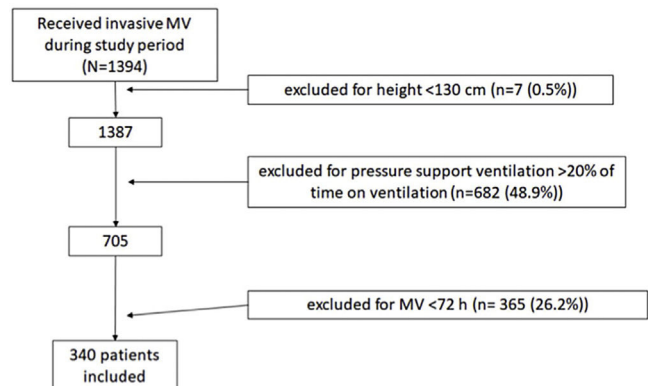


Figure 1 Flowchart of patients included in the study.

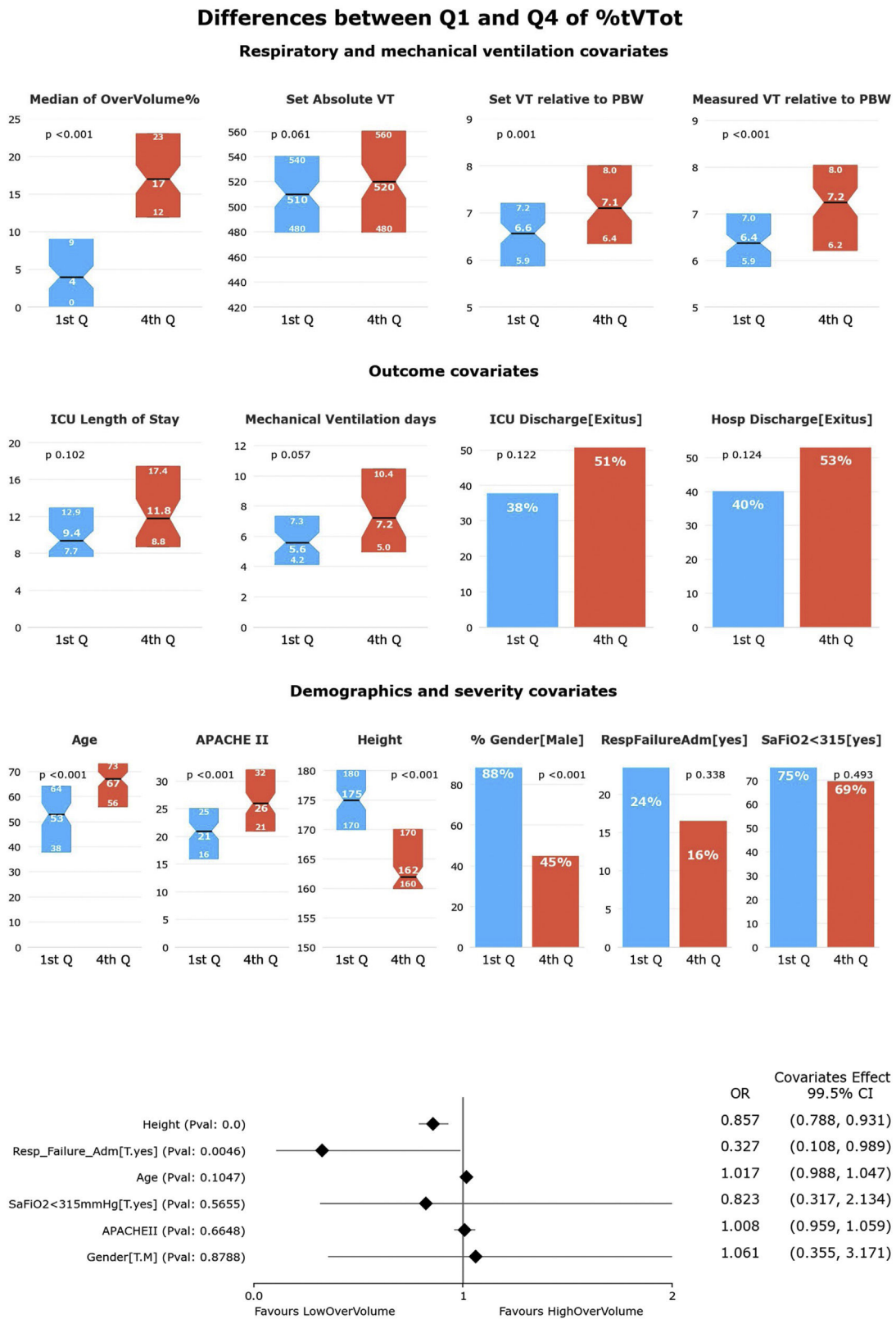


Figure 2 Univariate and multivariate differences for HR-Q1 (%tTVot).

In the univariate analysis, patients in Q4 (highest %tTVot) have higher set and measured TV relative to PBW, but not in absolute TV. There is no significant difference between Q1 and Q4 in outcome covariates. There is no difference in the distribution of patients with SaFiO₂ < 315 or admitted for respiratory failure in the quartiles. Patients in Q1 were mostly male, younger, taller, and less severely ill (significance at $p < 0.005$).

In the multivariate analysis, height was the most associated variable with %tTVot. (significance at $p < 0.005$).

our first HR-QI, patients in the first quartile included a greater proportion of men and were younger, taller, and less severely ill ($p < 0.001$) in comparison with the rest of quartiles. Comparing the first against the fourth quartile, the median excessive volume over the one required according to their PBW was lower [4% vs. 17%, respectively, $p < 0.001$]. It is important to highlight that no differences were found in the set absolute TV amount (mL) between the extreme quartiles ($p = 0.06$), suggesting that the relative amount to PBW (and therefore the height) is what makes the big difference ($p = 0.001$ and $p < 0.001$ for set and measured TV relative to PWB respectively). No other differences were observed in respiratory or MV variables. Even if ICU LOS, duration of MV and ICU and hospital mortality were higher in the fourth quartile than in the first, those differences were not significant (Fig. 2 and Supplementary Table 2).

In the multivariate analysis, only height was independently associated with %tTVot (Fig. 2). We obtained an accuracy of 77.94% and an AUC curve of 0.81 (0.74–0.86) (Supplementary Figure 1).

Second HR-QI (%pTVa)

Of the 340 patients analyzed, only 76 (22.3%) received appropriate TV according to the definitions of our second HR-QI. Patients receiving appropriate TV were younger and taller, with a greater predominance of men and lower severity of illness. As expected, %tTVot and excessive volume were higher in the group receiving inappropriate TV.

Although set TV did not differ between groups, measured TV adjusted for PBW was higher in the group receiving inappropriate TV (Fig. 3). Duration of MV and ICU LOS were significantly shorter in the group receiving appropriate TV ($p < 0.05$) (Figs. 4 and 5). No differences in ICU mortality were observed between the groups (Fig. 3 and Supplementary Table 3).

In the multivariate analysis, only height was associated with having an adequate TV (Fig. 3). We obtained an accuracy of 80.59% and an AUC curve of 0.82 (0.76–0.87) (Supplementary Figure 2).

Variables independently associated with ICU mortality

The crude mortality rate was 44.4% in the ICU and 45.9% in the hospital (Table 1). Patients who died were older (73.5 vs. 62.9), with higher APACHE II score (25 vs. 22), higher lactate concentration (2.3 vs 1.9) and lower SpO₂ level (95 vs. 96) (Supplementary Table 4).

We included all these 4 significant variables resulted from the univariate analysis together with our HR-QI target variables: %tTVot and TVa. We found that only age was independently associated with mortality (Supplementary Figure 3). We obtained an accuracy of 67.94% and an AUC curve of 0.74 (0.68–0.8) (Supplementary Figure 4).

Discussion

Technological advances since the first CIS and patient data management systems, which were introduced in the late

1980s,¹⁹ have enabled the integration of a wide range of bedside devices and automatic data collection.²⁰ To date, systematic reviews on using CIS have concentrated primarily on their organizational impact (e.g. charting, documenting, patient care, etc.) rather than their impact on clinical outcomes and quality assessment.^{21,22}

Our results support the view that the secondary use of data from the CIS can be very useful to assess adherence to clinical practice guidelines^{23,24} and create more accurate quality indicators, helping us to improve the process of care in our ICU. We adapted current definitions of indicators to allow them to be automatically calculated with data from our CIS.²⁵

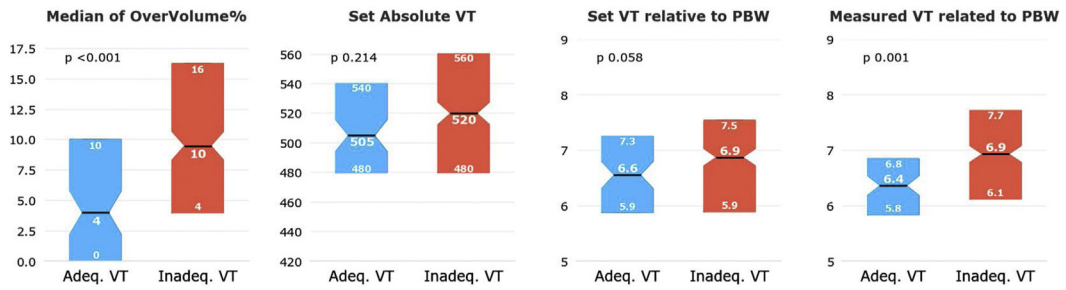
We have been able to perform a high-resolution evaluation of the adherence to recommendations for low TV in MV using data automatically and continuously collected (one measurement each 2 min) into the CIS. Since MV is dynamic and changeable 24 h a day, data extracted in other studies where respiratory variables have been measured once or twice a day,^{10,12,13} provide an incomplete picture of compliance with recommendations for protective mechanical ventilation. Our group have also carried out different studies analyzing the efficiency of random safety analysis on structure, process and outcome indicators, including protective mechanical ventilation, without detecting such a great lack of adherence as the CIS.^{26,27} Probably both methodologies are complementary.

Despite several studies reported benefits of low TV and it is recommended in clinical practice guidelines, there is poor adherence to them.^{13–15} We found that, on average, our patients received TV above the recommended cutoff (8 mL/kg PBW) 70% of time they were under MV. These results are in line with those reported in other studies.²⁸ Among various possible explanations for these findings, one that stands out is the use of actual body weight instead of PBW to set TV. Using PBW seeks to minimize volutrauma by better estimating the patient's lung capacity; lung capacity and respiratory system compliance relate more closely to height than to weight.¹⁶ We suspect that the main reason for not following guidelines on lower TV in our series was inaccurate calculation of PBW. In fact, we have observed that shorter patients and women (generally shorter than men) were more common ventilated with higher TV, as found in other studies.^{12,14,29,30} In a secondary analysis of data from the LUNG SAFE study, McNicholas et al.³¹ recently demonstrated important sex differences in the management and outcomes of patients with ARDS; lower TV was applied in only half the female patients, and shorter women more likely to receive higher TV than shorter men. Moreover, mortality rates were significantly higher in women.

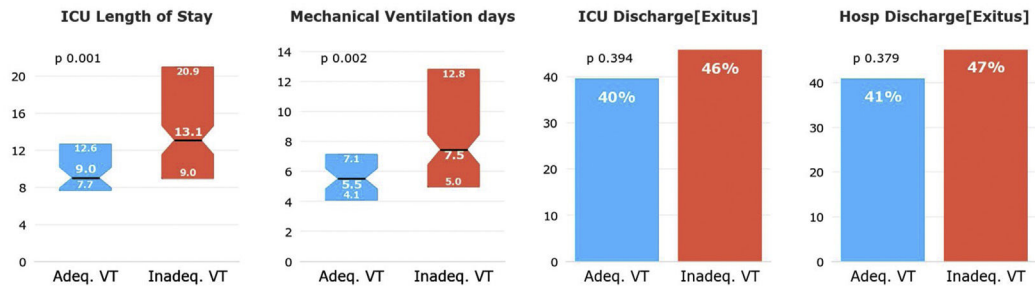
We observed that the duration of MV and ICU LOS were higher in patients with higher percentage of time on MV with TV above the target level and in those patients who received TV above the target level for more than 80% of the time, correlating with previous literature.²⁸ We found no association between the proportion of time with high TV and mortality. These findings are likely due to other factors that can impact mortality; for example, Serpa Neto et al. demonstrated that, even at low TV and low driving pressure, high mechanical power is associated with worse outcomes.³² Although our study have been focused on TV, CIS can also calculate driving pressure and mechanical power

Differences between InadequateVT and AdequateVT

Respiratory and mechanical ventilation covariates



Outcome covariates



Demographics and severity covariates

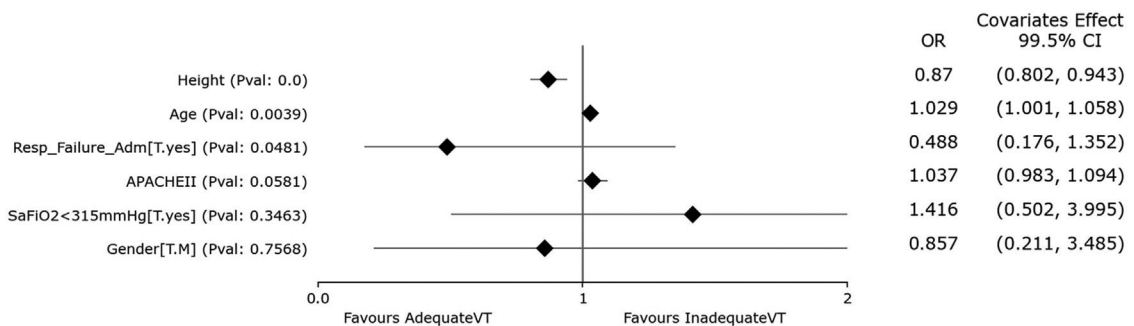
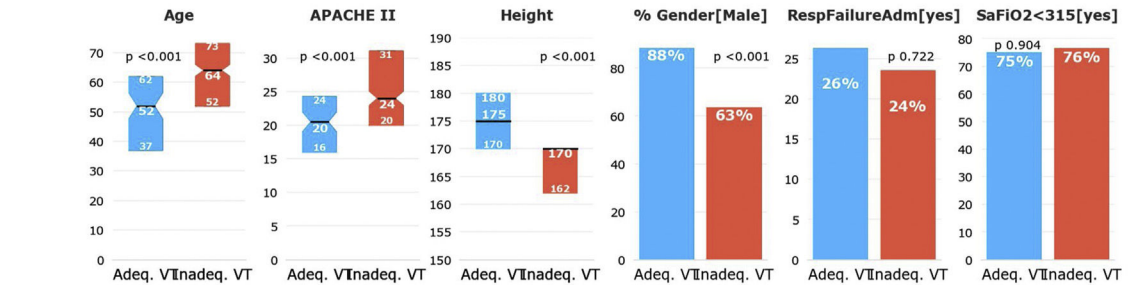


Figure 3 Univariate and multivariate differences for HR-Q2 (%pTVa).

In the univariate analysis, patients receiving appropriate TVa have shorter ICU length of stay and less mechanical ventilation days. There is no difference in the distribution of patients with SaFiO₂ < 315 or admitted for respiratory failure in the quartiles. Patients receiving TVa were mostly male, younger, taller, and less severely ill (significance at $p < 0.005$).

In the multivariate analysis, only height was independently associated with having an adequate TV (significance at $p < 0.005$).

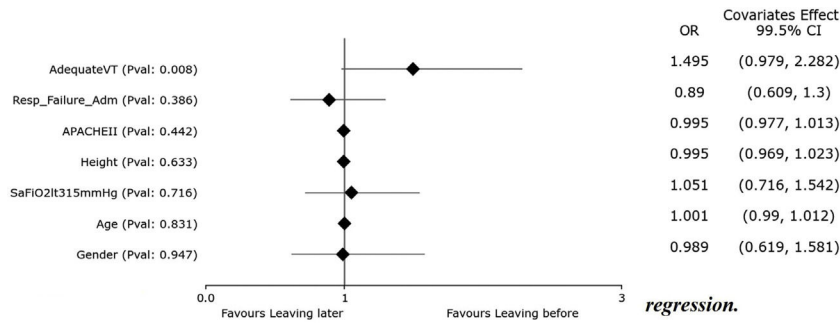


Figure 4 Cox regression. Days of IMV.

Adequate VT is the unique variable with $p < 0.05$. Adequate VT is the most related variable with the number of days in mechanical ventilation.

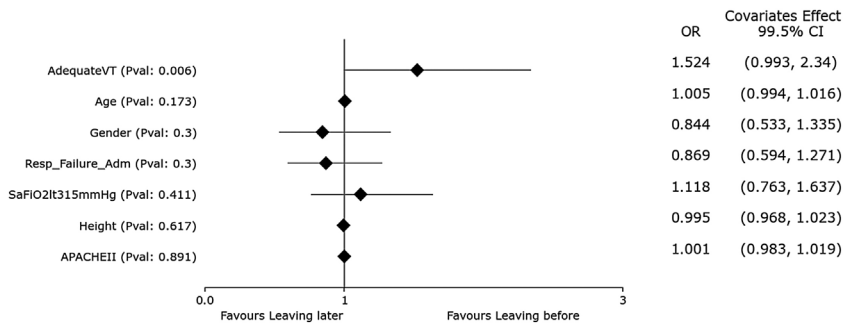


Figure 5 Cox regression. ICU length of stay.

Adequate VT is the unique variable with $p < 0.05$. Adequate VT is the most related variable with ICU length of stay.

values in a continuous way, that would be studied in the future.

It is widely recognized that protective mechanical ventilation with lower TV is associated with better clinical outcomes in patients with ARDS.⁹ Although most studies have shown that high TV is associated with increased complications also in patients with healthy lungs,^{10,11} evidence supporting protective mechanical ventilation in patients without ARDS is inconclusive.³³ However, there are good reasons to strongly consider using low TV in all patients,¹³ even at the initiation of MV.²⁸ Lung damage can occur within hours of initiating MV with inappropriate settings, ARDS is often unrecognized until after a delayed onset inflammatory process and critically ill patients are at risk of other causes of lung injury. Therefore, in addition to a therapeutic modality, low TV can be useful as a preventive measure, especially in patients with conditions involving increased risk of lung injury, such as sepsis, trauma, or high-risk surgeries.³⁴

Quality indicators proposed for respiratory care and MV did not include protective mechanical ventilation.^{35,36} However, considering findings of higher mortality in ARDS patients ventilated with high TV in the last decade,^{9,12} more recent quality-control guidelines from various countries include indicators related to protective mechanical ventilation,^{37,38} although some refer only to indicators of structure, for example the availability of a written protocol or routine for a lung-protective ventilatory strategy.³⁹ One reason why indicators that could provide better information about MV processes are not implemented is that accurate information to measure them is unavailable or difficult to obtain. Our study shows that this problem can be overcome.

Our study has important limitations that must be pointed out. First, our analysis included only patients who received volume-controlled MV. We did not analyze patients receiving pressure-controlled or pressure-support ventilation, because in this context TV is influenced by the applied airway pressures as well as the compliance of the respiratory system,⁴⁰ increasing the margin of error in determining actual TV set or in analyzing its impact on outcomes. Second, we did not consider the characteristics of MV in the emergency room or operating room prior to ICU admission, which may affect outcomes⁴¹; however, including only patients undergoing >72 h MV in the ICU probably reduced the impact of ventilation outside the ICU on outcomes drastically. Furthermore, because we were unable to calculate PaO₂/FiO₂ in all patients, we used SaO₂/FiO₂ instead; SaO₂/FiO₂ is accessible and reliable, can be obtained continuously, and correlates acceptably with PaO₂/FiO₂.¹⁷ Nevertheless, our study has the strength of using continuous data from a very homogeneous population of ventilated patients. Data-based decision making depends on the quality of the data and we have taken steps to guarantee their quality. An earlier study demonstrated that none of the variables collected by our data management tool differed significantly from those collected manually by trained staff.⁵

Conclusion

There is low adherence to clinical practice guidelines related to protective mechanical ventilation. The amount TV over target time and the amount of excessive TV worsen patients' outcomes. Men, taller, younger, and less severely ill are better ventilated according to clinical practice

guidelines, which suggest that PBW needs to be calculated more carefully in our unit. Data extracted from the CIS can provide invaluable information about deviations from recommended clinical practice. Automatically generating HR-QI allowed us to identify actions to improve the quality of care in our ICU, sparing professionals the tedious, time-consuming tasks of collecting data and calculating indicators.

Clinical relevance statement

Our study demonstrates how the data stored into the Electronic Health Records through the Clinical Information Systems can be exploited to build high-resolution quality indicators (HR-QI) of care without any extra efforts for the healthcare professionals. We evaluated two HR-QI to assess tidal volume and its impact on outcomes.

Ethics approval

The study was approved by the Ethics and Clinical Research Committee (CEIm Institut d'Investigació Sanitària Virgili – Reference IRB#41/2016).

Code availability

The code for the current study is available from the corresponding author on reasonable request.

Funding

This study was supported by grants from the Fondo de Investigación Sanitaria (Institute of Health Carlos III from Spain, FIS grants, project PI20/01674) and Plá estratègic de reserca i innovació en salut (PERIS SLT017/20/000030).

Authors' contributions

- Conceptualization: María Bodí, Alejandro Rodríguez, Sara Manrique.
- Data curation; Formal analysis; Software: Josep Gomez, Manuel Ruiz-Botella.
- Funding acquisition: María Bodí.
- Methodology: María Bodí, Federico Gordo.
- Supervision: María Bodí, Josep Gomez.
- Validation: Josep Gomez.
- Writing – original draft: Sara Manrique, Alejandro Rodríguez, Manuel Ruiz-Botella, Federico Gordo.
- Writing – review and editing: Alejandro Rodríguez, María Bodí, Josep Gomez.

Conflict of interest

None.

Acknowledgements

Advanced Analysis of Critical Data (AACD) research group:
Physicians: María Bodí, Alejandro Rodríguez, Gerard Moreno, Christian Villavicencio, Mari Carmen Gilavert,

Sara Rosich, Ángel Pobo, Mónica Magret, Gonzalo Sirgo, Laura Claverías, Vanessa Blázquez, Federico Esteban, Iulen Leache, Paula Perello, Iban Oliva, Manuel Samper, Oriol Plans, Marc Cartanyà, Sandra Canelles, Raquel Carbonell.

UCI Data-Analitics: Josep Gómez, Manuel Ruiz-Botella, Jordi Albiol, Eduard Mayol.

John Giba edited the manuscript.

Appendix A. Supplementary data

Supplementary data associated with this article can be found, in the online version, at [doi:10.1016/j.medin.2022.03.013](https://doi.org/10.1016/j.medin.2022.03.013).

References

1. Winters BD, Bharmal A, Wilson RF, Zhang A, Engineer L, Defoe D, et al. Validity of the agency for health care research and quality patient safety indicators and the centers for medicare and medicaid hospital-acquired conditions a systematic review and meta-analysis. *Med Care.* 2016;54:1105–11, [http://dx.doi.org/10.1097/MLR.0000000000000550](https://dx.doi.org/10.1097/MLR.0000000000000550).
2. Panzer RJ, Gitomer RS, Greene WH, Webster PR, Landry KR, Riccobono CA. Increasing demands for quality measurement. *JAMA – J Am Med Assoc.* 2013;310:1971–80, [http://dx.doi.org/10.1001/jama.2013.282047](https://dx.doi.org/10.1001/jama.2013.282047).
3. Salluh JIF, Chiche JD, Reis CE, Soares M. New perspectives to improve critical care benchmarking. *Ann Intensive Care.* 2018;8:18–20, [http://dx.doi.org/10.1186/s13613-018-0363-0](https://dx.doi.org/10.1186/s13613-018-0363-0).
4. Burstin H, Leatherman S, Goldmann D. The evolution of health-care quality measurement in the United States. *J Intern Med.* 2016;279:154–9, [http://dx.doi.org/10.1111/joim.12471](https://dx.doi.org/10.1111/joim.12471).
5. Sirgo G, Esteban F, Gómez J, Moreno G, Rodríguez A, Blanch L, et al. Validation of the ICUDaMa tool for automatically extracting variables for a minimum dataset and quality indicators: The importance of data quality assessment. *Int J Med Inform.* 2018;112:166–72, [http://dx.doi.org/10.1016/j.ijmedinf.2018.02.007](https://dx.doi.org/10.1016/j.ijmedinf.2018.02.007).
6. Mihalek AD. Ventilator-induced lung injury and ventilator-associated lung injury. *Massachusetts Gen Hosp Rev Crit Care Med.* 2013;58–9, [http://dx.doi.org/10.1056/NEJMra1208707](https://dx.doi.org/10.1056/NEJMra1208707) [published online].
7. Dreyfuss D, Soler P, Basset G, Saumon G. High inflation pressure pulmonary edema. Respective effects of high airway pressure, high tidal volume, and positive end-expiratory pressure. *Am Rev Respir Dis.* 1988;137:1159–64, [http://dx.doi.org/10.1164/ajrccm/137.5.1159](https://dx.doi.org/10.1164/ajrccm/137.5.1159). PMID: 3057957.
8. Fan E, Del Sorbo L, Goligher EC, Hodgson CL, Munshi L, Walkey AJ, et al. An official American Thoracic Society/European Society of intensive care medicine/society of critical care medicine clinical practice guideline: mechanical ventilation in adult patients with acute respiratory distress syndrome. *Am J Respir Crit Care Med.* 2017;195:1253–63, [http://dx.doi.org/10.1164/rccm.201703-0548ST](https://dx.doi.org/10.1164/rccm.201703-0548ST).
9. Acute Respiratory Distress Syndrome Network, Brower RG, Matthay MA, Morris A, Schoenfeld D, Thompson BT, Wheeler A. Ventilation with lower tidal volumes as compared with traditional tidal volumes for acute lung injury and the acute respiratory distress syndrome. *N Engl J Med.* 2000;342(18):1301–8, [http://dx.doi.org/10.1056/NEJM200005043421801](https://dx.doi.org/10.1056/NEJM200005043421801).
10. Neto AS, Cardoso SO, Manetta JA, Pereira VG, Espósito DC, Pasqualucci MO, et al. Association between use of lung-protective ventilation with lower tidal volumes and clinical outcomes among patients without acute respiratory distress syndrome: a meta-analysis. *JAMA – J Am Med*

- Assoc. 2012;308:1651–9, <http://dx.doi.org/10.1001/jama.2012.13730>.
11. Determann RM, Royakkers A, Wolthuis EK, Vlaar AP, Choi G, Paulus F, et al. Ventilation with lower tidal volumes as compared with conventional tidal volumes for patients without acute lung injury: a preventive randomized controlled trial. *Crit Care*. 2010;14:1–14, <http://dx.doi.org/10.1186/cc8230>.
 12. Bellani G, Laffey JG, Pham T, Fan E, Brochard L, Esteban A, et al. Epidemiology, patterns of care, and mortality for patients with acute respiratory distress syndrome in intensive care units in 50 countries. *JAMA – J Am Med Assoc*. 2016;315:788–800, <http://dx.doi.org/10.1001/jama.2016.0291>.
 13. Sjoding MW, Gong MN, Haas CF, Iwashyna TJ. Evaluating delivery of low tidal volume ventilation in six ICUs using electronic health record data. *Crit Care Med*. 2019;47:56–61, <http://dx.doi.org/10.1097/CCM.0000000000003469>.
 14. Weiss CH, Baker DW, Weiner S, Bechel M, Ragland M, Rademaker A, et al. Low tidal volume ventilation use in acute respiratory distress syndrome. *Crit Care Med*. 2016;44:1515–22, <http://dx.doi.org/10.1097/CCM.0000000000001710>.
 15. Sjoding M, Iwashyna TJ. Care for ARDS in 2016: room to improve. *Lancet Respir Med*. 2016;4:936–7, [http://dx.doi.org/10.1016/S2213-2600\(16\)30372-1](http://dx.doi.org/10.1016/S2213-2600(16)30372-1).
 16. Martin DC, Richards GN. Predicted body weight relationships for protective ventilation – unisex proposals from pre-term through to adult. *BMC Pulm Med*. 2017;17:1–13, <http://dx.doi.org/10.1186/s12890-017-0427-1>.
 17. Rice TW, Wheeler AP, Bernard GR, Hayden DL, Schoenfeld DA, Ware LB. Comparison of the SpO₂/FiO₂ ratio and the PaO₂/FiO₂ ratio in patients with acute lung injury or ARDS. *Chest*. 2007;132:410–7, <http://dx.doi.org/10.1378/chest.07-0617>.
 18. Thiese MS, Ronna B, Ott U. P value interpretations and considerations. *J Thorac Dis*. 2016;8:E928–31, <http://dx.doi.org/10.21037/jtd.2016.08.16>.
 19. Sun Y, Guo F, Kaffashi F, Jacono FJ, DeGeorgia M, Loparo KA. INSMA: an integrated system for multimodal data acquisition and analysis in the intensive care unit. *J Biomed Inform*. 2020;106:103434, <http://dx.doi.org/10.1016/j.jbi.2020.103434>.
 20. Cheung A, van Velden FH, Lagerburg V, Minderman N. The organizational and clinical impact of integrating bedside equipment to an information system: a systematic literature review of patient data management systems (PDMS). *Int J Med Inf*. 2015;84:155–65, <http://dx.doi.org/10.1016/j.ijmedinf.2014.12.002>.
 21. Salluh JIF, Soares M, Keegan MT. Understanding intensive care unit benchmarking. *Intensive Care Med*. 2017;43:1703–7, <http://dx.doi.org/10.1007/s00134-017-4760-x>.
 22. Dziadzko MA, Thongprayoon C, Ahmed A, Tiong IC, Li M, Brown DR, et al. Automatic quality improvement reports in the intensive care unit: one step closer toward meaningful use. *World J Crit Care Med*. 2016;5:165, <http://dx.doi.org/10.5492/wjccm.v5.i2.165>.
 23. Pollard TJ, Johnson AEW, Raffa JD, Celi LA, Mark RG, Badawi O. The eICU collaborative research database, a freely available multi-center database for critical care research. *Sci Data*. 2018;5:1–13, <http://dx.doi.org/10.1038/sdata.2018.178>.
 24. Cosgriff CV, Celi LA, Stone DJ. Critical care. Critical data. *Biomed Eng Comput Biol*. 2019;10, <http://dx.doi.org/10.1177/1179597219856564>.
 25. Bodí M, Claverias L, Esteban F, Sirgo G, Rodríguez A, De Haro L, Guardiola JJ, et al. Automatic generation of minimum dataset and quality indicators from data collected routinely by the clinical information system in an intensive care unit. *Inter J Med Inform*. 2021;145, 104327.
 26. Sirgo Rodríguez G, Olona Cabases M, Martín Delgado MC, Esteban Reboll F, Pobo Peris A, Bodí Saera M. Audits in real time for safety in critical care: definition and pilot study. *Med Intensiva*. 2014;38:473–82, <http://dx.doi.org/10.1016/j.medin.2013.11.008>.
 27. Bodí M, Oliva I, Martín MC, Gilavert MC, Muñoz C, Olona M, et al. Impact of random safety analyses on structure, process and outcome indicators: multicentre study. *Ann Intensive Care*. 2017;7:23, <http://dx.doi.org/10.1186/s13613-017-0245-x>.
 28. Needham DM, Yang T, Dinglas VD, Mendez-Tellez PA, Shanholtz C, Sevransky JE, et al. Timing of low tidal volume ventilation and intensive care unit mortality in acute respiratory distress syndrome: a prospective cohort study. *Am J Respir Crit Care Med*. 2015;191:177–85, <http://dx.doi.org/10.1164/rccm.201409-1598OC>.
 29. McAuley D. Acute lung injury and the acute respiratory distress syndrome in Ireland: a prospective audit of epidemiology and management. *Crit Care*. 2008;12:1–8, <http://dx.doi.org/10.1186/cc6808>.
 30. Walkey AJ, Wiener RS. Risk factors for under use of lung-protective ventilation in acute lung injury. *J Crit Care*. 2012;27:323, <http://dx.doi.org/10.1016/j.jcrc.2011.06.015>, e1–9. Epub 19 August 2011. PMID: 21855285; PMCID: PMC3223550.
 31. McNicholas BA, Madotto F, Pham T, Rezoagli E, Masterson CH, Horie S, et al. Demographics, management and outcome of females and males with acute respiratory distress syndrome in the LUNG SAFE prospective cohort study. *Eur Respir J*. 2019;54, <http://dx.doi.org/10.1183/13993003.00609-2019>.
 32. Serpa Neto A, Deliberato RO, Johnson AEW, Bos LD, Amorim P, Pereira SM, et al. Mechanical power of ventilation is associated with mortality in critically ill patients: an analysis of patients in two observational cohorts. *Intensive Care Med*. 2018;44:1914–22, <http://dx.doi.org/10.1007/s00134-018-5375-6>.
 33. Simonis FD, Serpa Neto A, Binnekade JM, Braber A, Bruin KCM, Determann RM, et al. Effect of a low vs intermediate tidal volume strategy on ventilator-free days in intensive care unit patients without ARDS: a randomized clinical trial. *JAMA – J Am Med Assoc*. 2018;320:1872–80, <http://dx.doi.org/10.1001/jama.2018.14280>.
 34. Schultz MJ, Haitsma JJ, Slutsky AS, Gajic O. What tidal volumes should be used in patients without acute lung injury? *Anesthesiology*. 2007;106:1226–31, <http://dx.doi.org/10.1097/01.anes.0000267607.25011.e8>.
 35. Pronovost PJ, Miller MR, Dorman T, Berenholtz SM, Rubin H. Developing and implementing measures of quality of care in the intensive care unit. *Curr Opin Crit Care*. 2001;7:297–303, <http://dx.doi.org/10.1097/00075198-200108000-00014>.
 36. Flaatten H. The present use of quality indicators in the intensive care unit. *Acta Anaesthesiol Scand*. 2012;56:1078–83, <http://dx.doi.org/10.1111/j.1399-6576.2012.02656.x>.
 37. Kumpf O, Braun JP, Brinkmann A, Bause H, Bellgardt M, Bloos F, et al. Quality indicators in intensive care medicine 2017. *Anasth Intensivmed*. 2018;59:326–49, <http://dx.doi.org/10.3205/000251>.
 38. SEMICYUC. Quality indicators in critically ill patients; 2017 update. https://semicyuc.org/wpcontent/uploads/2007/04/2017_qualityindicators_eng.pdf [accessed 3.07.20].
 39. De Carvalho AGR, de Moraes APP, Tanaka LMS, Gomes RV, da Silva AAM. Quality in intensive care units: proposal of an assessment instrument. *BMC Res Notes*. 2017;10:1–13, <http://dx.doi.org/10.1186/s13104-017-2563-3>.
 40. Campbell RS, Davis BR. Pressure-controlled versus volume-controlled ventilation: does it matter? *Respir Care*. 2002;47:416–24, discussion 424–6. PMID: 11929615.
 41. Futier E, Constantin JM, Paugam-Burtz C, Pascal J, Eurin M, Neuschwander A, et al. A trial of intraoperative low-tidal-volume ventilation in abdominal surgery. *N Engl J Med*. 2013;369:428–37, <http://dx.doi.org/10.1056/nejmoa1301082>.