



ORIGINAL ARTICLE

The accuracy of PiCCO® in measuring cardiac output in patients under therapeutic hypothermia: Comparison with transthoracic echocardiography



T. Souto Moura^{a,*}, S. Aguiar Rosa^b, N. Germano^c, R. Cavaco^c, T. Sequeira^c,
M. Alves^d, A.L. Papoila^{d,e}, L. Bento^c

^a Medicine Department 1, 4 São José's Hospital, Central Lisbon Hospitalar Centre, Portugal

^b Cardiology Department, Santa Marta's Hospital, Central Lisbon Hospitalar Centre, Portugal

^c Medical Urgency Unit, São José's Hospital, Central Lisbon Hospitalar Centre, Portugal

^d Epidemiological and Statistical Analysis Department, Investigation Center of the Central Lisbon Hospitalar Centre, Portugal

^e Statistical and Applications Center of NOVA Medical School, Portugal

Received 19 December 2016; accepted 17 March 2017

Available online 25 May 2017

KEYWORDS

PiCCO monitor;
Cardiac output;
Hypothermia;
Doppler
echocardiography;
Hemodynamic
monitoring

Abstract

Background: Invasive cardiac monitoring using thermodilution methods such as PiCCO® is widely used in critically ill patients and provides a wide range of hemodynamic variables, including cardiac output (CO). However, in post-cardiac arrest patients subjected to therapeutic hypothermia, the low body temperature possibly could interfere with the technique. Transthoracic Doppler echocardiography (ECHO) has long proved its accuracy in estimating CO, and is not influenced by temperature changes.

Objective: To assess the accuracy of PiCCO® in measuring CO in patients under therapeutic hypothermia, compared with ECHO.

Design and patients: Thirty paired COECHO/COPiCCO measurements were analyzed in 15 patients subjected to hypothermia after cardiac arrest. Eighteen paired measurements were obtained at under 36 °C and 12 at ≥36 °C. A value of 0.5 l/min was considered the maximum accepted difference between the COECHO and COPiCCO values.

Results: Under conditions of normothermia (≥36 °C), the mean difference between COECHO and COPiCCO was 0.030 l/min, with limits of agreement (−0.22, 0.28) – all of the measurements differing by less than 0.5 l/min. In situations of hypothermia (<36 °C), the mean difference in CO measurements was −0.426 l/min, with limits of agreement (−1.60, 0.75), and only 44% (8/18) of the paired measurements fell within the interval (−0.5, 0.5). The calculated temperature cut-off point maximizing specificity was 35.95 °C: above this temperature, specificity was 100%, with a false-positive rate of 0%.

* Corresponding author.

E-mail address: teresasoutomoura@gmail.com (T. Souto Moura).

PALABRAS CLAVE

Monitor PiCCO;
Gasto cardíaco;
Hipotermia;
Ecocardiografía
doppler;
Monitorización
hemodinámica

Conclusions: The results clearly show clinically relevant discordance between COECHO and CO_{PiCCO} at temperatures of $<36^{\circ}\text{C}$, demonstrating the inaccuracy of PiCCO® for cardiac output measurements in hypothermic patients.

© 2017 Elsevier España, S.L.U. y SEMICYUC. All rights reserved.

La exactitud de PiCCO® para medir el gasto cardíaco en pacientes bajo hipotermia terapéutica: comparación con ecocardiografía transtorácica

Resumen

Introducción: La monitorización invasiva cardíaca mediante métodos de termodilución, como PiCCO®, es ampliamente utilizada en pacientes críticamente enfermos y proporciona una gran variedad de variables hemodinámicas, como el gasto cardíaco (GC). No obstante, en los pacientes post-paro cardíaco bajo hipotermia terapéutica, la baja temperatura corporal podría interferir con la técnica. La ecocardiografía doppler transtorácica (ECHO) ha demostrado su exactitud en la estimación del GC y no está influenciada por los cambios de temperatura.

Objetivo: El objetivo del presente estudio fue evaluar la exactitud de PiCCO® para medir el GC en pacientes bajo hipotermia terapéutica, en comparación con ECHO.

Diseño y pacientes: Se analizaron 30 pares de mediciones GC_ECHO/GC_PiCCO en 15 pacientes sometidos a hipotermia después de un paro cardíaco. La máxima diferencia aceptada entre los valores de GC_ECHO y GC_PiCCO se consideró 18 mediciones pareadas se realizaron a menos de 36°C y 12 a $\geq 36^{\circ}\text{C}$. 0,5 L/min.

Resultados: En la normotermia ($\geq 36^{\circ}\text{C}$), la diferencia media entre GC_ECHO y GC_PiCCO fue de 0,030 L/min, con límites de concordancia (-0,22; 0,28), todas las medidas difieren menos de 0,5 L/min. En la hipotermia ($<36^{\circ}\text{C}$), la diferencia media de las mediciones fue -0,426 L/min con límites de concordancia (-1,60; 0,75) y solo el 44% de las mediciones cayeron en el intervalo (-0,5; 0,5). El límite de temperatura calculado que maximiza la especificidad fue $35,95^{\circ}\text{C}$, por encima del cual la especificidad fue del 100% y la tasa de falsos positivos del 0%.

Conclusiones: Los resultados muestran claramente una discordancia clínicamente relevante entre GC_ECHO y GC_PiCCO en temperatura $<36^{\circ}\text{C}$, lo que revela la inexactitud de PiCCO® para las mediciones del gasto cardíaco en pacientes hipotérmicos.

© 2017 Elsevier España, S.L.U. y SEMICYUC. Todos los derechos reservados.

Introduction

In post-cardiac arrest patients, mild induced hypothermia has proven to be neuroprotective and to improve the global outcome after the initial period of cerebral hypoxia-ischemia.^{1,2} This probably occurs because hypothermia reduces cerebral oxygen demand, decreases intracranial pressure and also limits the production of oxygen free radicals, diminishing brain damage.¹ The term targeted temperature management is now preferred, and the most recent resuscitation guidelines recommend a constant temperature between $32\text{--}36^{\circ}\text{C}$ for at least 24h, although the optimal target temperature remains uncertain, waiting for more large controlled trials on this matter.³

The initial management of the so called 'post-resuscitation syndrome' is challenging. Hypovolemia, excessive vasodilation and reversible myocardial stunning frequently results in early hypotension that can be life-threatening.^{4,5} This hemodynamic instability is managed with the use of fluids, inotropes and vasopressors if needed.^{3,4} Therefore, it is important to have a correct monitoring of hemodynamic and pulmonary variables, in

order to optimize those therapies,⁵ sometimes using invasive devices.

The PiCCO® (pulse index continuous cardiac output) system, in use for over 10 years, allows the measuring of a large number of variables throughout central venous and peripheral arterial catheterization alone. Among other parameters, it is used to measure cardiac output (CO) through a transpulmonary thermodilution method.

Despite the unquestionable utility of PiCCO® in situations of hemodynamic instability, as a thermodilution method, it is assumed that the temperature within the artery stays stable during calibration and measurements. That might not be the case during hypothermia and other variations of body temperature.

Transthoracic Doppler echocardiography (ECHO) has long proved its accuracy in CO estimation, including in critically ill patients.⁶⁻¹⁰ It can be performed in different scenarios, including therapeutic hypothermia, and it is not influenced by temperature changes.

Therefore, the aim of the present study was to assess the concordance between the CO values measured by PiCCO® (CO_{PiCCO}) and by ECHO (CO_{ECHO}), in patients under therapeutic hypothermia following cardiac arrest.

Methods

Study design and patients

This single-center, prospective cohort study was conducted in the intensive care unit (ICU) of a tertiary hospital of Lisbon, between August 2014 and July 2015. Following approval of the ethic committee of Centro Hospitalar de Lisboa Central, informed consent was obtained from each patient's next of kin or a posteriori from the patient himself.

The study included all patients admitted to the ICU for therapeutic hypothermia following cardiac arrest, according to the unit protocol. The exclusion criteria were any condition that contraindicated the insertion of PiCCO® or impaired the transthoracic echocardiographic window, as neck and thoracic severe trauma, burning or skin infection. Additionally, patients were excluded if they had pathology that could diminish the accuracy of CO calculation using ECHO (chronic atrial fibrillation, cardiac valve disease, pulmonary thromboembolism or intracardiac shunts) or PiCCO (severe peripheral arterial disease or arterial bypass).

Procedures

At ICU admission, patients received central venous catheter (Kimal®; 5-lumened, 8.5 Fr × 15 cm) on the internal jugular or subclavian vein and a PiCCO® catheter (Pulsion Medical Systems, 5 Fr × 20 cm) inserted in the femoral artery, connected to a Siemens MP 50 monitor with the appropriate software. Based on the modified Stewart-Hamilton equation, cardiac output is inversely related to the concentration and total passage time of an indicator solution measured after its transit through the heart.¹¹

$$CO = \frac{(T_b - T_i) \times V_i \times K}{\int \Delta T_b \times dt} \quad (1)$$

Equation 1: Adapted Stewart-Hamilton equation, where CO = Cardiac output; Tb = Blood temperature; Ti = injectate temperature; Vi = injectate volume; K = constant; $\int \Delta T_b \times dt$ = area under the thermodilution curve.

During the therapeutic hypothermia and rewarming period, CO was calculated through the PiCCO system followed by ECHO estimation (General Electric® VIVID S5, with 3.5 MHz probe). The two measurements were performed by different, blinded investigators, as close as possible (maximum interval of time: 10 minutes). At the same time, central temperature and hemodynamic data (heart rate, rhythm and mean arterial systemic pressure) were registered. It was assured the constancy of each interfering variable such as level of sedation, ventilation parameters, vasoactive drugs or any other IV infusion. Therefore, a pair of CO measurements (one by PiCCO and one by ECHO) for a determined temperature was obtained. Additionally, demographic data, severity scores at admission, cause and rhythm of arrest and final outcome were collected.

We considered 0.5 L/min as the maximum clinically accepted difference between the values of CO_{ECHO} and CO_{PiCCO}. In other words, the two methods were considered to agree when the difference fell in the interval (-0.5, 0.5).

PiCCO measurements

For the CO calculation by thermodilution technique, 20 ml of iced (<8 °C) saline 0.9% was delivered in the proximal lumen of the central venous catheter and mixed with blood through the systemic and pulmonary circulation. The injection was performed as rapidly as possible, irrespective of the respiratory cycle. The thermistor-tipped arterial line, placed in the femoral artery, quantified the change in temperature over time. The thermodilution curve recorded by the arterial thermistor was automatically analyzed by the PiCCO® software, obtaining the value of CO. Triplicate injections were performed for each set of measurements and considered the mean value of the three.

Echocardiographic measurements

The Doppler estimated CO was obtained multiplying the heart rate (HR) by the Doppler estimated stroke volume (SV). The last one uses the velocity-time integral of flow through the left ventricular outflow tract (VTI_{LVOT}) and the area of the left ventricular outflow tract (A_{LVOT}) which, in turn, is calculated using the left ventricular outflow tract diameter (D_{LVOT}) by the following formula:

$$CO_{ECHO} = HR \times VTI_{LVOT} \times D_{LVOT}^2 \times \pi / 4$$

The VTI_{LVOT} was recorded by pulsed-wave Doppler from an apical five-chamber view, by placing the Doppler sample immediately below the aortic valve annulus, aligned with the center of the valve where the flow is maximum. The final value of VTI_{LVOT} was the mean of three consecutive determinations. D_{LVOT} was measured in a parasternal long-axis view, just before the aortic annulus, from the inner edge to outer edge, parallel to the valve apparatus.

Five complete and consecutive measurements were performed, and considered the mean as the final value for CO_{ECHO}.

Echocardiography inter-observer and intra-observer variability analysis

In order to assure the reliability of the CO_{ECHO} measurements, as the operator dependent errors are the major pitfall of this technique, a previous study was conducted to evaluate the echocardiographic skills of the five investigators involved in the major study. Repeating the procedure as described above (mean three determinations of VTI_{LVOT} and one of D_{LVOT}), each investigator performed five CO_{ECHO} measurements in a patient under therapeutic hypothermia and was followed by other blinded investigator who obtained another five measurements. This procedure was repeated in ten different patients so that every investigator was compared with each of the other four.

Statistical analysis

Continuous variables were described with mean and standard deviation (SD) or median and inter-quantile range (IQR: 25th percentile–75th percentile), as appropriate.

Categorical data were presented as frequencies and percentages.

To assess the precision of the ECHO measurements, the intra-observer repeatability and inter-observer reproducibility were studied using intraclass correlation coefficients (ICCs), and corresponding 95% confidence intervals. These were estimated using a generalized linear mixed effects model with a random intercept and a random slope, taking into account the correlation structure between CO measures of the same patient. To evaluate the agreement between ECHO and PiCCO for measuring CO, Bland–Altman graphical method was used. Additionally, a stratified analysis by temperature ($<36^{\circ}\text{C}$, $\geq 36^{\circ}\text{C}$) was performed using generalized linear mixed effects models with a random intercept, where the difference between the two methods was adjusted by temperature. Both generalized linear mixed effects models considered a variance–covariance matrix defined as a multiple of the identity matrix.

The best cut-off value that identifies patients who have a difference between CO_{ECHO} and CO_{PiCCO} belonging to the interval $(-0.5, 0.5)$, was calculated by maximizing specificity.¹² After discretizing CO measures by the obtained cut-off value, diagnostic test performance measures (sensitivity, specificity, positive and negative predictive values as well as false positive and false negative rates) were calculated.

The level of significance $\alpha=0.05$ was considered. Data analysis was performed using Stata (StataCorp. 2011; Stata Statistical Software: Release 12, College Station, TX: Stata-Corp LP.) and R software (R: A Language and Environment for Statistical Computing, R Core Team, R Foundation for Statistical Computing, Vienna, Austria, year=2014, <http://www.R-project.org>).

Results

Patients

Fifteen patients met the inclusion criteria of the study. The demographic characteristics, severity scores at admission as well as the arrest rhythm and cause are displayed in Table 1. Eleven patients (73%) initiated hypothermia protocol in the ICU, one started cooling in pre-hospital care and the remaining three began the protocol in the Emergency Department. In-hospital mortality was 47%.

Echocardiography preliminary study

Regarding the intra-observer repeatability and inter-observer reproducibility, the intraclass correlation coefficients were both equal to 0.998 (95% CI: 0.995–0.999) (Fig. 1).

CO measurements

A total of 30 paired $\text{CO}_{\text{ECHO}}/\text{CO}_{\text{PiCCO}}$ measurements were analyzed. The mean time interval between the measurements was 7 (SD=2) minutes. Mean temperature during the measurements was 35°C , with 18 paired measurements

Table 1 Patients' characteristics.

Patients' characteristics (n = 15)	
<i>Age median (IQR) years</i>	66 (57–69)
Male gender n (%)	11 (73)
Caucasian n (%)	11 (73)
<i>Severity scores</i>	
APACHE II (median)	23
SAPS II (median)	58
<i>Arrest rhythm n (%)</i>	
Asystole	7 (47)
Ventricular fibrillation	3 (20)
Unknown	5 (33)
<i>Arrest cause n (%)</i>	
Cardiogenic shock	4 (26)
Septic shock	1 (7)
Hypovolemic shock	1 (7)
Respiratory insufficiency	3 (20)
Metabolic coma	1 (7)
Unknown	5 (33)

performed under 36°C and 12 at a temperature equal or superior to 36°C .

In overall pairs of CO measurements, the mean difference between the two methods was $-0.24\text{L}/\text{min}$, with limits of agreement $(-1.26, 0.77)$.

Considering the measurements at normothermia ($\geq 36^{\circ}\text{C}$), the mean difference was $0.030\text{L}/\text{min}$, with limits of agreement $(-0.22, 0.28)$. All of the 12 pairs of CO measurements registered at this temperature, differed less than $0.5\text{L}/\text{min}$, previously defined as an acceptable difference (Fig. 2a).

In hypothermia ($<36^{\circ}\text{C}$), the mean difference of CO measurements was $-0.426\text{L}/\text{min}$ with limits of agreement $(-1.60, 0.75)$ and only 44% (8/18) of the paired measurements fell in the interval $(-0.5, 0.5)$. For the remaining 10 measurements that differed more than $0.5\text{L}/\text{min}$, the difference $\text{CO}_{\text{ECHO}} - \text{CO}_{\text{PiCCO}}$ was negative in most cases (Fig. 2b).

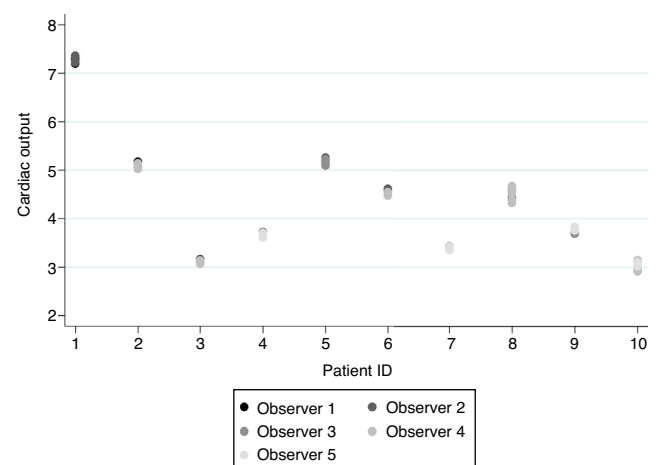


Figure 1 Echocardiography inter-observer and intra-observer variability analysis – Scatterplot of cardiac output versus patient.

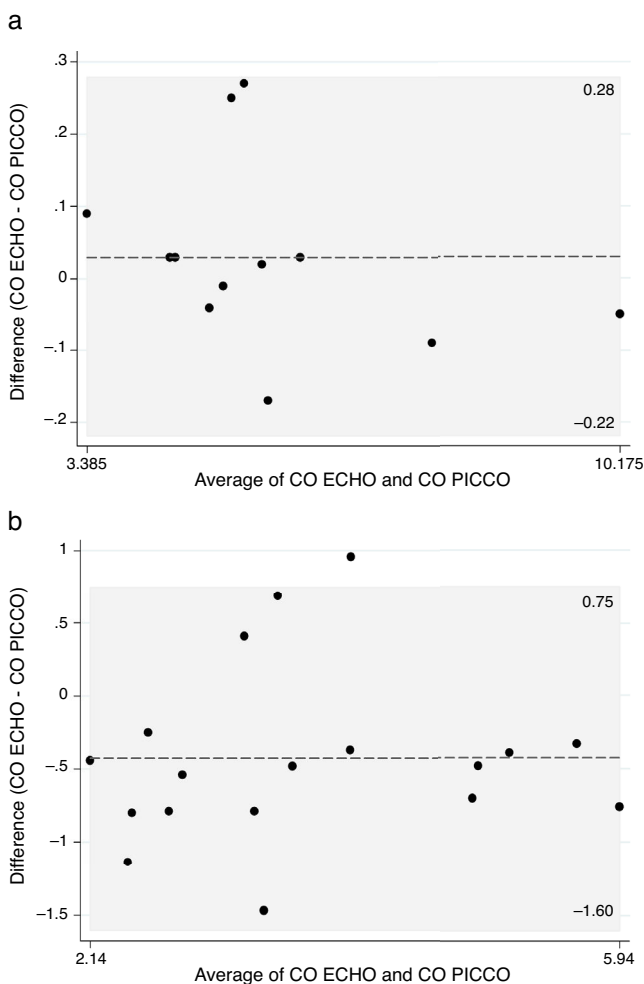


Figure 2 Discrepancy between PiCCO and ECHO cardiac output measures with a temperature $\geq 36^\circ\text{C}$ (a) and $< 36^\circ\text{C}$ (b).

Fig. 3 reinforces that the concordance between CO_{PiCCO} and CO_{ECHO} measurements was better when temperature was equal or above 36°C .

The calculated temperature cut-off, in order to maximize specificity, was 35.95°C . Above this temperature, the specificity was 100% and the false positive rate was 0%, traducing a complete agreement between the methods.

Table 2 Multivariable regression analysis results for CO values stratified by temperature.

Models	Coefficient estimate (95% CI)	p-value
<i>Temperature $< 36^\circ\text{C}$</i>		
PiCCO ^a	0.43 (0.17, 0.68)	0.001
Temperature	0.59 (0.34, 0.84)	<0.001
<i>Temperature $\geq 36^\circ\text{C}$</i>		
PiCCO ^a	-0.03 (-0.10, 0.04)	0.374
Temperature	0.36 (-0.04, 0.75)	0.078

^a Reference category: ECHO, echocardiography; CI, confidence interval; PiCCO, pulse index continuous CO; p-values were obtained by linear mixed effects regression models.

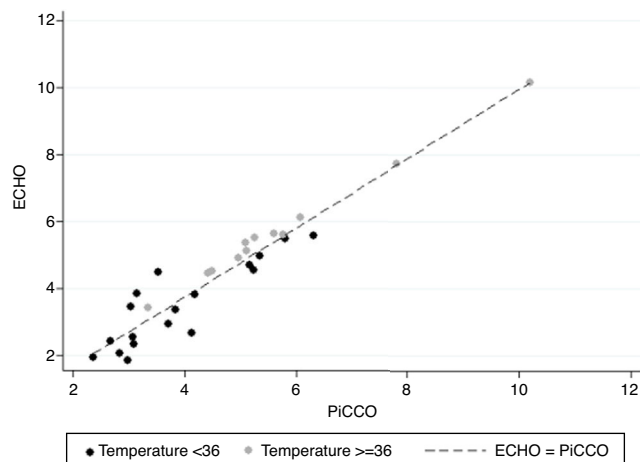


Figure 3 Scatterplot of PiCCO versus ECHO cardiac output measures, considering the groups of temperature $< 36^\circ\text{C}$ and $\geq 36^\circ\text{C}$. Dashed line represents the line where ECHO and PiCCO have equal values.

Results of the linear mixed effects models (Table 2) are in accordance with those obtained previously. In fact, for temperatures $< 36^\circ\text{C}$ the difference between the two methods, after adjusting for temperature, was statistically significant ($p = 0.001$). However, for temperatures $\geq 36^\circ\text{C}$, no significant difference was found between the two methods ($p = 0.374$). Additionally, the resulting ICC of the model for temperatures higher or equal 36°C was higher (0.998, 95% CI: 0.993–0.999) than that obtained for lower temperatures (0.843, 95% CI: 0.652–0.939).

Discussion

The results clearly show that the discordance between the cardiac output measured by PiCCO and transthoracic echocardiogram is bigger at lower temperatures. Comparing the paired measurements during hypothermia ($< 36^\circ\text{C}$) and normothermia ($\geq 36^\circ\text{C}$), it is clear that the later ones are far more coincident, as shown in Fig. 2 and confirmed by the results of the multivariable analysis. The control of potential confounding variables was assured for every pair of measurements, thus any difference between CO_{ECHO} and CO_{PiCCO} can be attributed exclusively to the methods. Furthermore, as echocardiography is not influenced by temperature changes, we concluded that lower body temperature diminishes accuracy of PiCCO measurements. This interference is called “thermal noise”, and several authors proved its influence on the precision and accuracy of thermodilution measurements.^{13–16}

To evaluate a certain measurement method, one should consider both precision – closeness of agreement between replicate measurements – and accuracy – closeness of agreement between a measurement value and its true value.¹⁷ Tagami *et al.* studied the precision of PiCCO in hypothermic patients following cardiac arrest by comparing measurements at different temperatures, during hypothermia and the rewarming period and found no significant changes.⁵ However, as Gasparetto *et al.* pointed out, not only the precision or reproducibility of PiCCO is important

to validate but also its accuracy¹⁸ under this condition. This means responding to the question “how close the measurement is to the actual or real value” and implies a comparison with a gold standard technique, in this context, ideally non temperature-dependent, such as echocardiography.

On interpreting the results, it must be remembered that echocardiography, itself, has its limitations and is not exempt of errors. Concretely in the obtainment of cardiac output values, it requires expertise on performing the five chamber view to measure VTI_{LVOT} and the long axis view, sometimes difficult in the critically ill patients, to measure the left ventricular outflow tract diameter (D_{LVOT}). Errors in this latest parameter are particularly serious, as it is squared in the CO formula. To overcome the potential errors on measuring the D_{LVOT} , Vermeiren et al. suggests its calculation according to the body surface area ($D_{LVOT} = 5.7 \times BSA + 12.1$). The authors also admit the use of fixed values for D_{LVOT} like 1.8 for female and 2.0 for male patients, or even the general value of 3 cm² for A_{LVOT} , which would greatly simplify the conclusions and decisions at the bedside.¹⁹

The measurements performed at $\geq 36^\circ$ had a very small mean difference (0.03 L/min) with narrow limits of agreement (−0.22, 0.28), therefore considered completely concordant, in terms of clinical practice.

On the other hand, the measurements of CO during hypothermia ($<36^\circ\text{C}$) had a mean difference of 0.426 L/min, still within the interval considered clinically accepted, but with much wider limits of agreement (−1.60, 0.75), traducing the elevated number of measurements that differed >0.5 L/min. In fact, more than 50% of the paired measurements performed at $<36^\circ\text{C}$ differed more than 0.5 L/min, with a tendency to overestimate CO measured by PiCCO.

Accordingly, the temperature cut-off value that assured specificity of 100% was 35.95°C , virtually the same as the 36°C used to distinguish normothermia and hypothermia. This means that only above this temperature the difference $CO_{ECHO} - CO_{PiCCO}$ was <0.5 L/min for all paired measurements.

In clinical practice, this can be extremely relevant, as the difference between $CO_{ECHO} - CO_{PiCCO}$ that we considered as clinically accepted (0.5 L/min) is already rather high in the context of critically ill and often hemodynamically instable patients. As so, a method that misleads the CO calculation, by more than 0.5 L/min, seems to us too inaccurate to be useful in these situations.

The implications of these findings can overtake the strict context of hypothermia after cardiac arrest, as the PiCCO system is used in other situations of low body temperature. For example patients experiencing unintended perioperative hypothermia ($<36^\circ\text{C}$),²⁰ in surgeries where the PiCCO system is used to hemodynamic monitoring.

The major limitation of this study is the sample size. This fact also precluded the stratification for different CO values which could be useful for more detailed analysis. Larger randomized studies are needed to confirm this inadequacy of PiCCO, and possibly other thermodilution methods, for patients under temperatures $<36^\circ\text{C}$.

Despite the very good results of the echocardiographic preliminary study, as a technique observer-dependent, it must always be considered as a potential source of bias.

Author contribution

The Authors Teresa Souto Moura, Sílvia Aguiar Rosa, Nuno Germano, Raquel Cavaco, Tania Sequeira and Luis Bento, declare that they have made substantial contributions to the conception and design of the study, the acquisition of data and the interpretation of the data.

Marta Alves, Ana Luisa Papoila have performed the analysis and interpretation of the data.

All the authors have commented on the draft of the article and critical revision of the intellectual content, as well as the definitive approval of the version that is presented.

Conflicts of interest

The authors declare that there is no conflict of interest.

Acknowledgment

The authors wish to thank the medical team of the Unidade de Urgência Médica for their help during the implementation of the study.

References

- Bernard SA, Gray TW, Buist MD, Jones BM, Silvester W, Gutteridge GSK. Treatment of comatose survivors of out-of-hospital cardiac arrest with induced hypothermia. *N Engl J Med.* 2002;346:557–63.
- Group THACAS. Mild therapeutic hypothermia to improve the neurologic outcome after cardiac arrest. *N Engl J Med.* 2002;346:549–56.
- Nolan JP, Soar J, Cariou A, Cronberg T, Moulart VR, Deakin CD, et al. European Resuscitation Council and European Society of Intensive Care Medicine Guidelines for Post-resuscitation Care 2015: Section 5 of the European Resuscitation Council Guidelines for Resuscitation 2015. *Resuscitation.* 2015;95:202–22.
- Neumar R, Nolan JP, Andrieu C. Post-cardiac arrest syndrome: Epidemiology, Pathophysiology, Treatment, and Prognostication A Consensus Statement From the International Liaison Committee on Resuscitation. *Circulation.* 2008;118:2452–83.
- Tagami T, Kushimoto S, Tosa R, Omura M, Hagiwara J, Hiramasa H, et al. The precision of PiCCO measurements in hypothermic post-cardiac arrest patients. *Anesthesia.* 2012;23:6–243.
- Lewis JF, Kuo LC, Nelson JG, Limacher MC, Quinones MA. Pulsed Doppler echocardiographic determination of stroke volume and cardiac output: clinical validation of two new methods using the apical window. *Circulation.* 1984;70:425–31.
- McLean A, Needham A, Stewart D, Parkin R. Estimation of cardiac output by noninvasive echocardiographic techniques in the critically ill subject. *Anaesth Intensive Care.* 1997;25:250–4.
- Marcelino P, Germano N, Marum S, Fernandes AP, Ribeiro P, Lopes MG. Haemodynamic parameters obtained by transthoracic echocardiography and Swan-Ganz catheter: a comparative study in liver transplant patients. *Acta Med Port.* 2006;19:197–206.
- Tian Z, Liu YT, Fang Q, Ni C, Chen TB, Fang LG, et al. Hemodynamic parameters obtained by transthoracic echocardiography and right heart catheterization: a comparative study in patients with pulmonary hypertension. *Chin Med J (Engl).* 2011;124:1796–801.
- Leache Irigoyen J, Marín Corral J, Oliva Zelaya I, Moreno Muñoz G, Blázquez Alcaide V, Bodí Saera M, et al. Accuracy of cardiac output estimations by transthoracic echocardiography

- compared with an accepted method of thermodilution, the pulmonary artery catheter, in the critically ill patients. *Intensive Care Med Exp.* 2015;3:A598.
11. Litton B, Morgan M. Review: The PiCCO monitor: a review. *Anesth Intensive Care.* 2012;40:393–409.
 12. Lopez-Raton M, Rodriguez-Alvarez MX, Cadarso-Suarez C, Gude-Sampedro F. OptimalCutpoints: an R package for selecting optimal cutpoints in diagnostic tests. *J Stat Softw.* 2014;61:1–36.
 13. Sami A, Sami A, Rochdil N, Hatem K, Salah BL. PiCCO monitoring accuracy in low body temperature. *Am J Emerg Med.* 2007;25:845–6.
 14. Holm C, Mayr M, Horbrand F, Tegeler J, Henckel von Donnersmarck G, Mühlbauer W, et al. Reproducibility of transpulmonary thermodilution measurements in patients with burn shock and hypothermia. *J Burn Care Rehabil.* 2005;26:260–5.
 15. Böttiger BW, Rauch H, Böhrer H, Motsch J, Soder M, Fleischer F, et al. Continuous versus intermittent cardiac output measurement in cardiac surgical patients undergoing hypothermic cardiopulmonary bypass. *J Cardiothorac Vasc Anesth.* 1995;9:405–11.
 16. Ong T, Gillies M. Failure of continuous cardiac output measurement using the PiCCO Device during induced hypothermia: a case report. Failure of continuous cardiac output measurement using the PiCCO device during induced hypothermia: a case report. *Crit Care Resusc.* 2004;1:3–16.
 17. Squara P, Imhoff M, Cecconi M. Metrology in medicine: from measurements to decision, with specific reference to anesthesia and intensive care. *Anesth Analg.* 2015;120:66–75.
 18. Gasparetto N, Cacciavillani L, Valente S. The accuracy of PiCCO \dot{O} measurements in hypothermic post-cardiac arrest patients. Dynamic optimisation of the sniff position during laryngoscopy – an alternative technique Equipment manufacturers must differentiate auditory alarms for equipment used concur. *Anesthesia.* 2012;201:1–2012.
 19. Vermeiren GLJ, Malbrain MLNG, Walpot JMJB. Cardiac ultrasonography in the critical care setting: a practical approach to assess cardiac function and preload for the 'non-cardiologist'. *Anaesthesiol Intensive Ther.* 2015;47:89–104.
 20. Hart SR, Bordes B, Hart ÀJ, Corsino D, Harmon D. Unintended perioperative hypothermia. *Ochsner J.* 2011;11:259–70.