



## IMAGES IN INTENSIVE MEDICINE

### Spontaneous pneumothorax and pneumomediastinum in bilateral pneumonia due to COVID-19<sup>☆</sup>



### Neumomediastino y neumotórax espontáneo en neumonía bilateral por COVID-19

R.M. Vela Colmenero<sup>\*</sup>, M.D. Pola Gallego de Guzmán, M.C. Molina de la Torre

*Servicio de Medicina Intensiva, Complejo Hospitalario de Jaén, Jaén, Spain*

Available online 3 October 2020



Figure 1

A 65-year-old diabetic male with non-seasonal asthma treated with inhaled corticosteroids was admitted to the

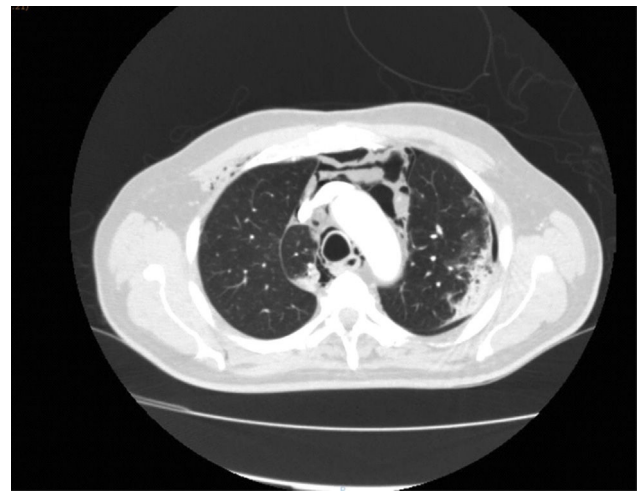


Figure 2

Intensive Care Unit diagnosed with bilateral pneumonia due to COVID-19 and hypoxemic acute respiratory failure with the administration of high-flow nasal oxygen. The physical examination revealed subcutaneous emphysema predominantly located in the right side of the neck; emergency CT

<sup>☆</sup> Please cite this article as: Vela Colmenero RM, Pola Gallego de Guzmán MD, Molina de la Torre MC. Neumomediastino y neumotórax espontáneo en neumonía bilateral por COVID-19. *Med Intensiva*. 2020;155:591–592.

<sup>\*</sup> Corresponding author.

E-mail address: [rosa.vela@hotmail.com](mailto:rosa.vela@hotmail.com) (R.M. Vela Colmenero).

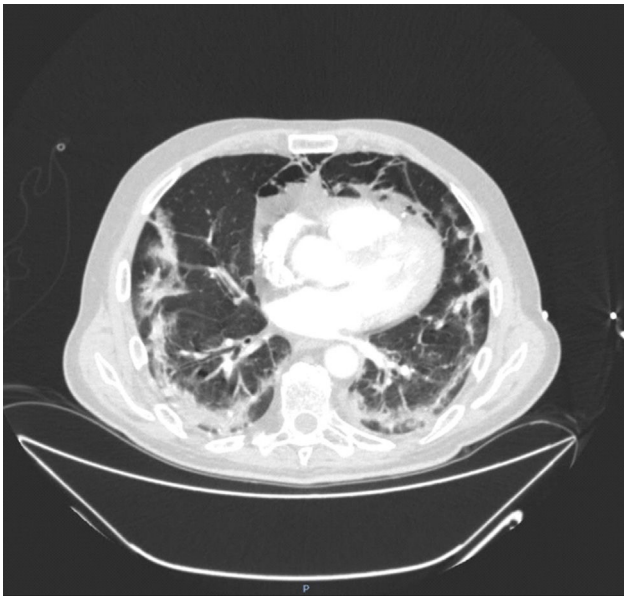


Figure 3

with contrast administration was thus requested, revealing important pneumomediastinum mainly in the anterior zone (Fig. 1), with no apparent underlying cause; mild apical pneumothorax at the periphery of the left lung (Fig. 2); and a ground-glass pattern of bilateral peripheral predominance associated to areas of consolidation and air bronchogram (Fig. 3).